



# ST. DOMINIC'S COLLEGE, KANJIRAPALLY

AFFILIATED TO MAHATMA GANDHI UNIVERSITY KOTTAYAM

RE-ACCREDITED WITH A GRADE BY NAAC

ABSORB & RADIATE



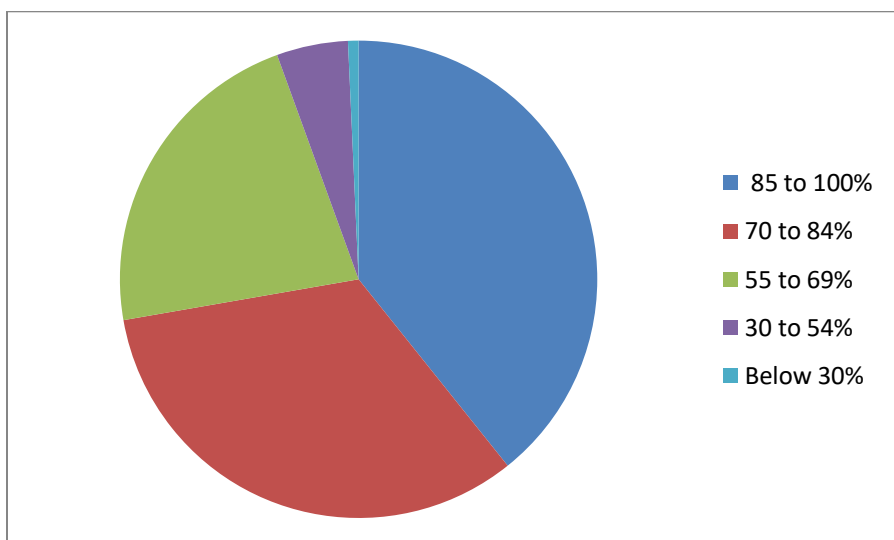
## REPORT OF STUDENT SATISFACTION SURVEY 2021-22



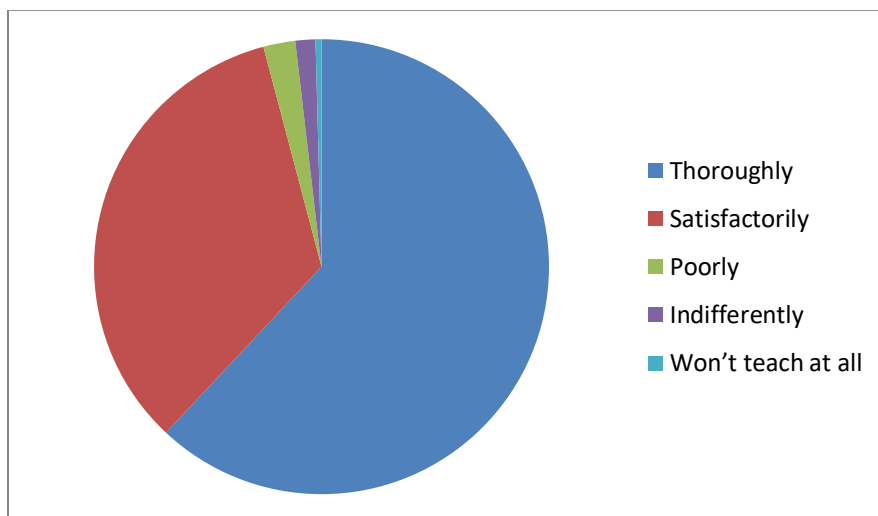
## Report of Student Satisfaction Survey: 2021-22

The student satisfaction survey for 2021-22 is conducted in tune with the questionnaire proposed by NAAC. 706 students from across all the courses participated in the survey and marked their feedback. The feedbacks are tabulated and results were analyzed by the college. Proper follow up measures are initiated based on the survey. The abstract of the survey is reported below;

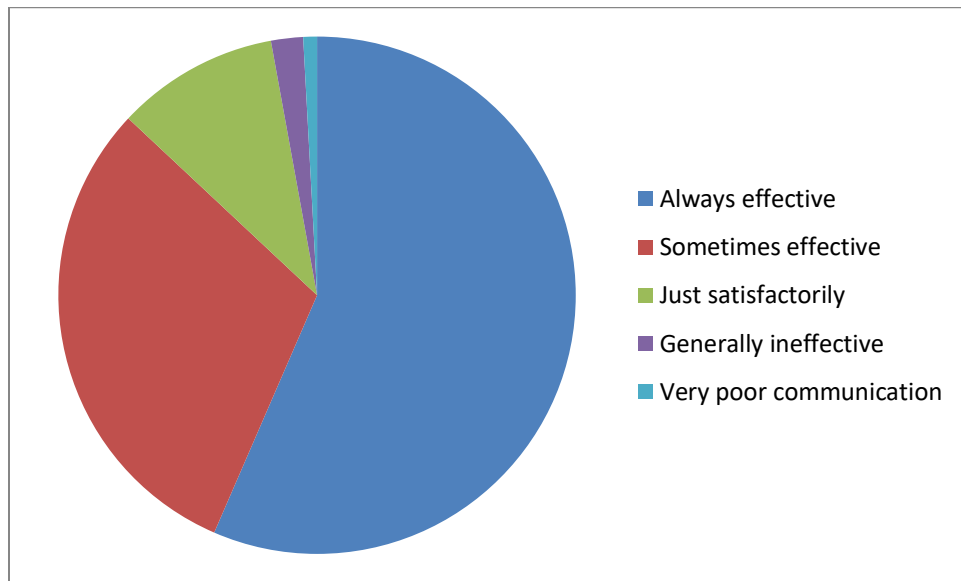
### 1. How much of the syllabus was covered in the class?



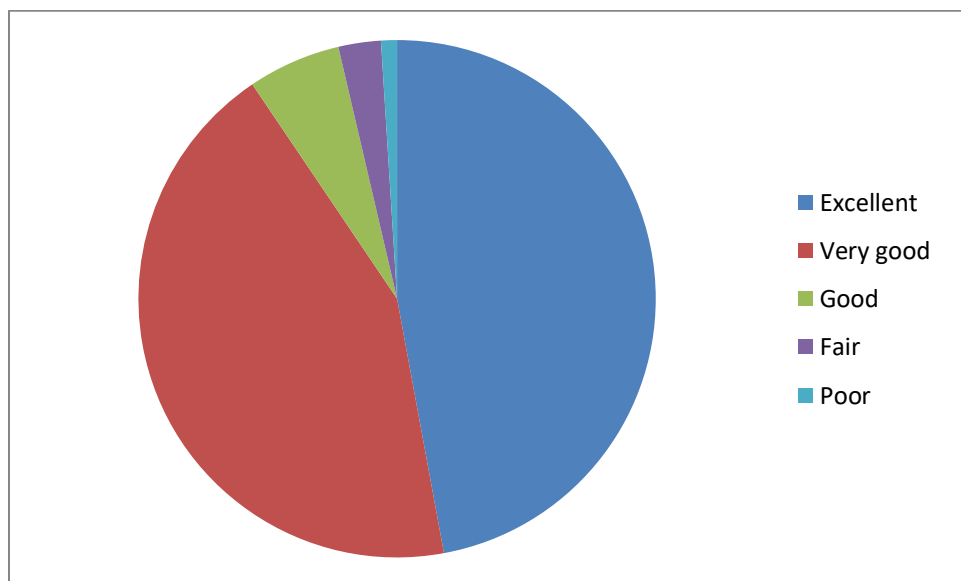
### 2. How well did the teachers prepare for the classes?



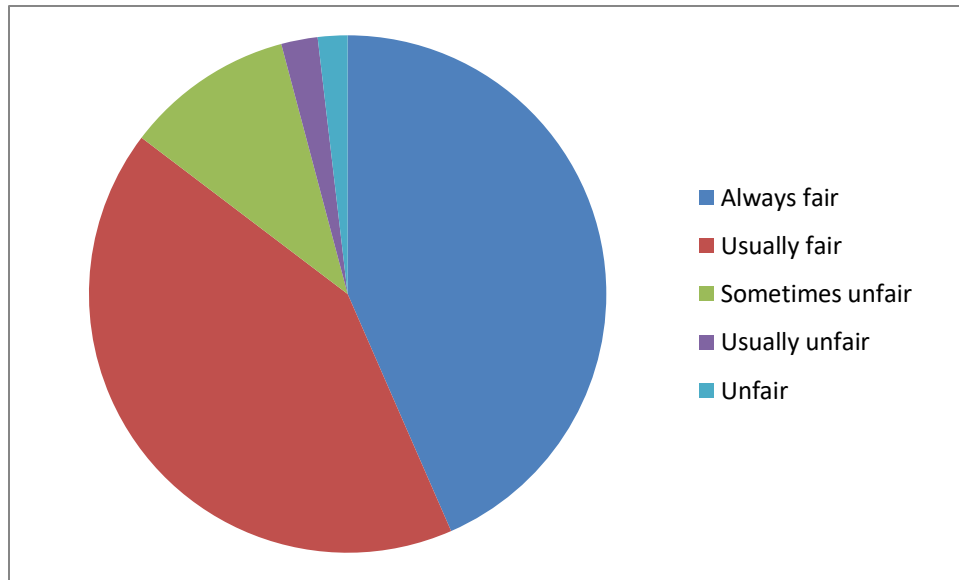
### 3. How well were the teachers able to communicate



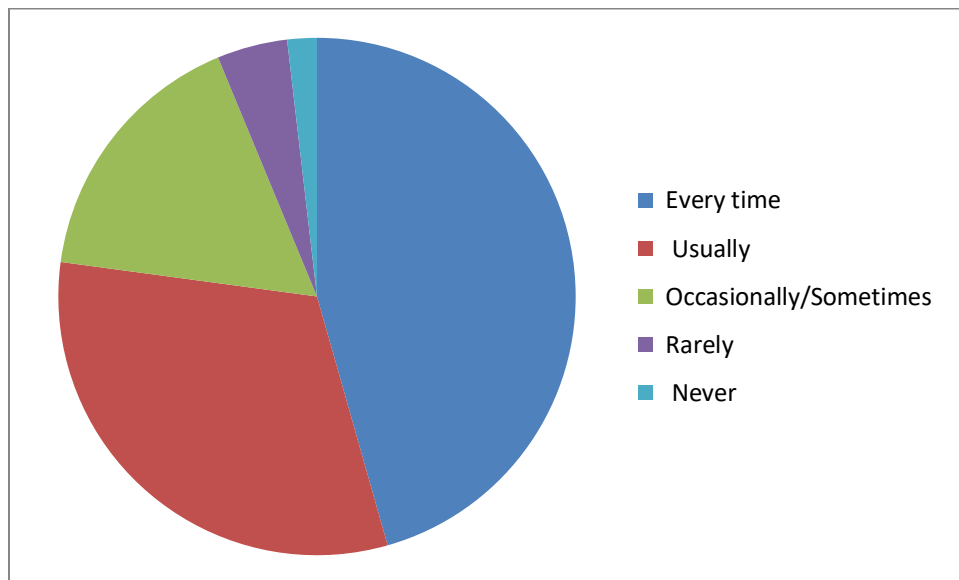
### 4. The teacher's approach to teaching



## 5. Fairness of the internal evaluation process



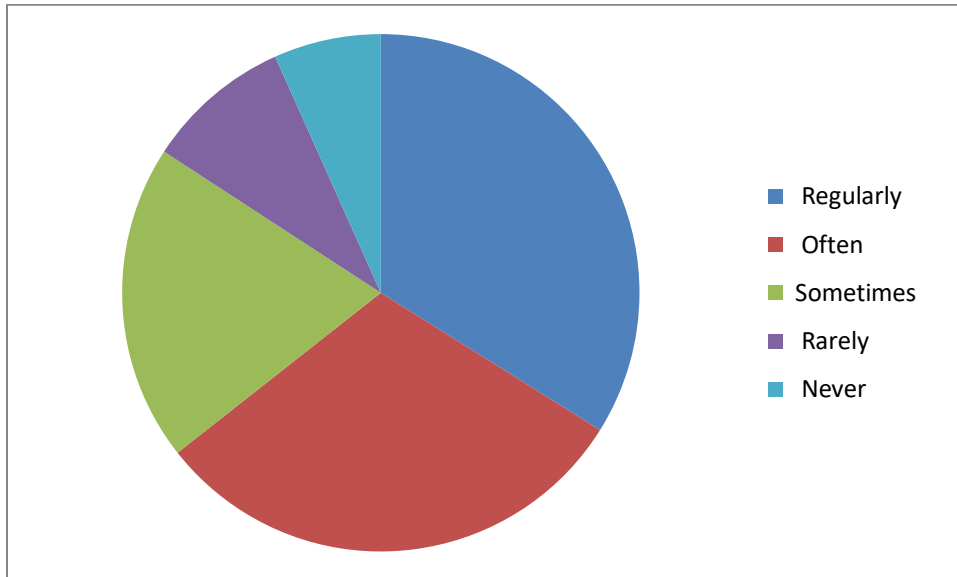
## 6. Was your performance in assignments discussed with you?



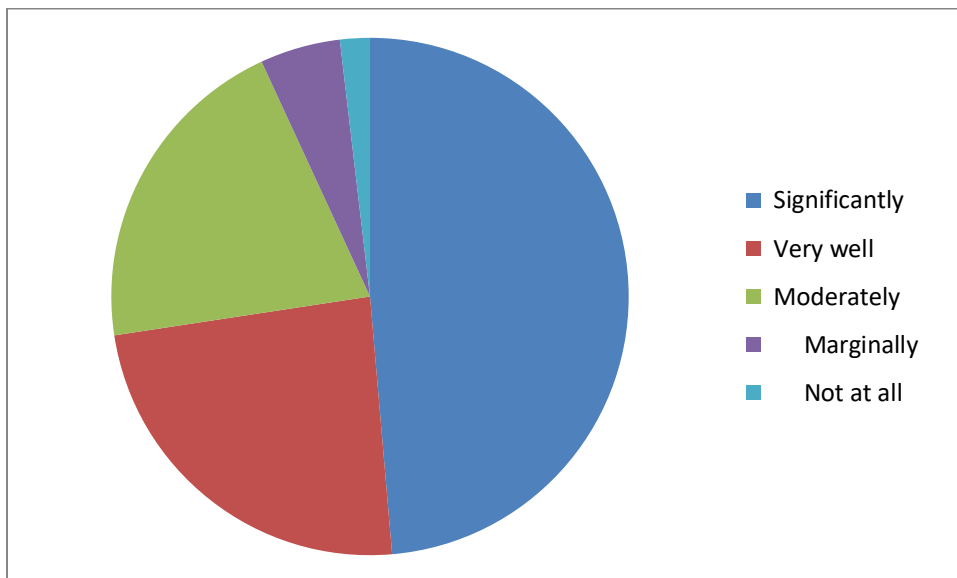
# ST. DOMINIC'S COLLEGE, KANJIRAPALLY

---

7. The institute takes active interest in promoting internship, student exchange, field visits



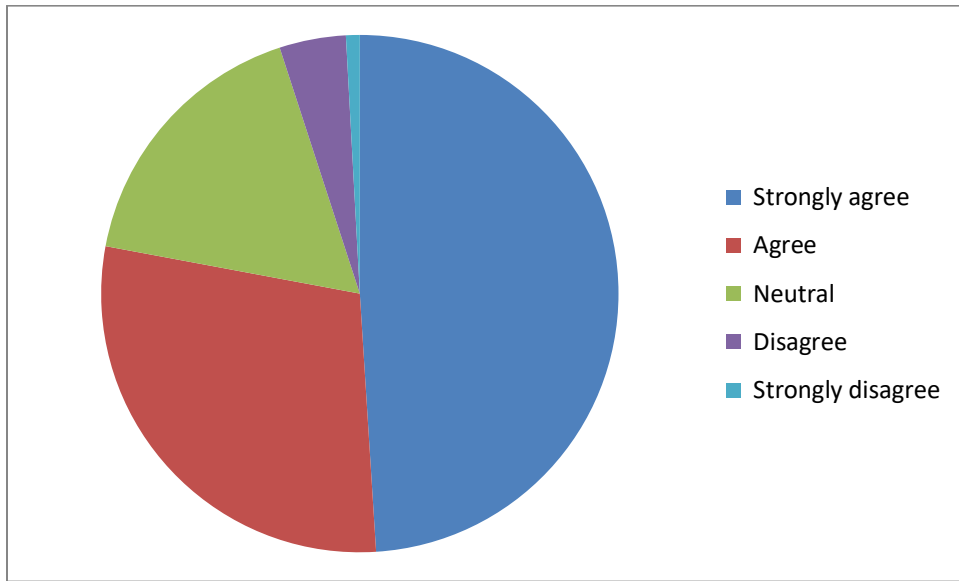
8. The teaching and mentoring process in your institution facilitates you in cognitive, social and emotional growth



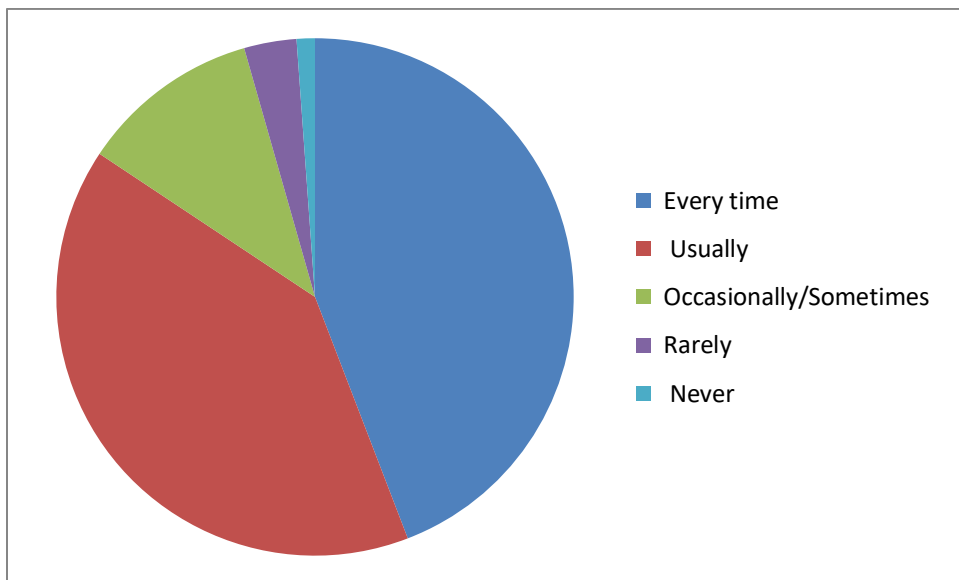
# ST. DOMINIC'S COLLEGE, KANJIRAPALLY

---

9. The institution provides multiple opportunities to learn and grow



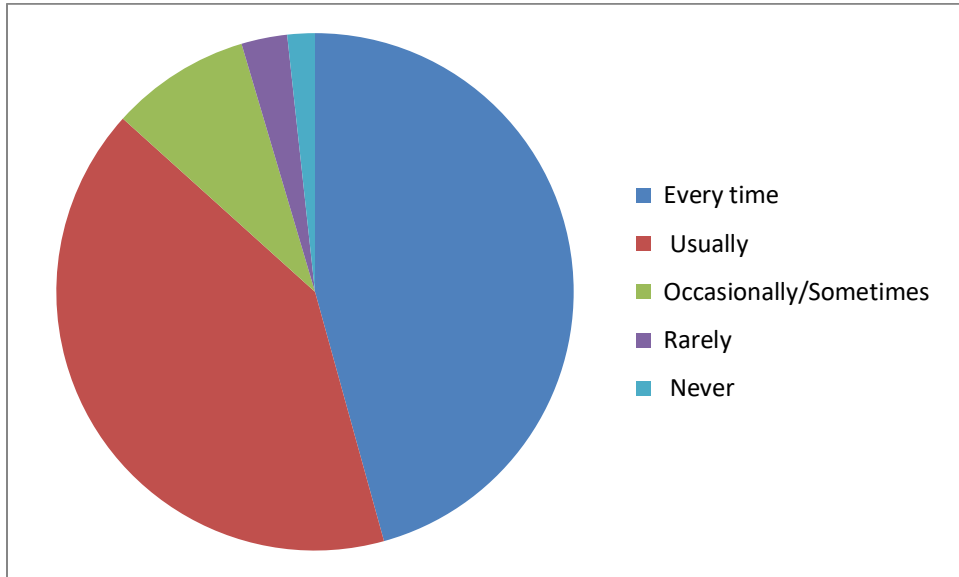
10. Teachers inform you about your expected competencies, course outcomes and programme outcomes.



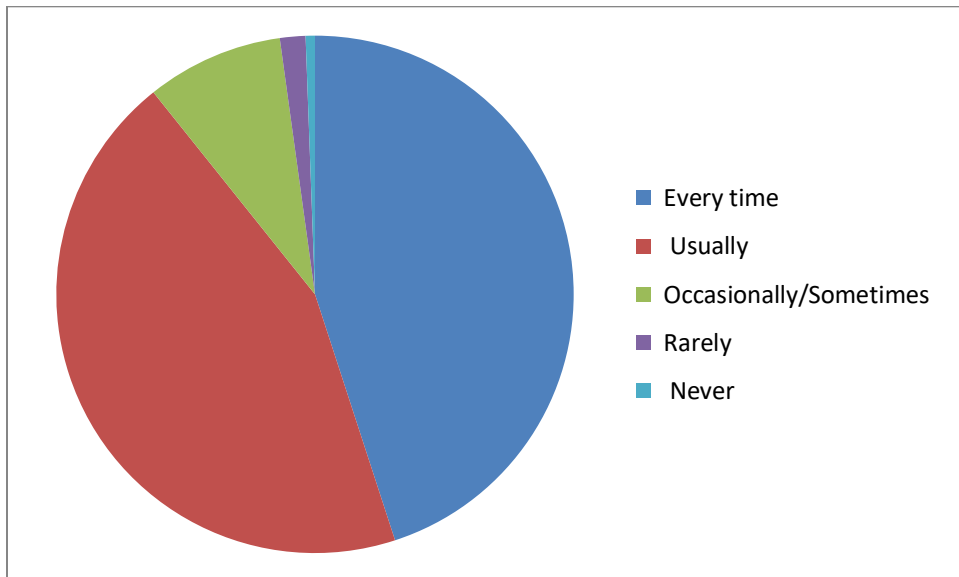
# ST. DOMINIC'S COLLEGE, KANJIRAPALLY

---

11. Your mentor does a necessary follow- up with an assigned task to you.



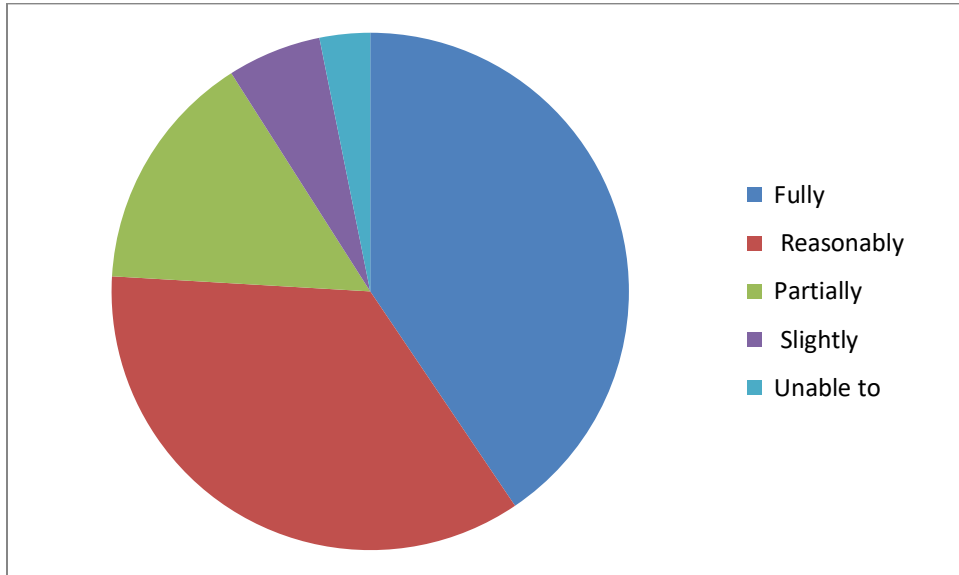
12. The teachers illustrate the concepts through examples and applications.



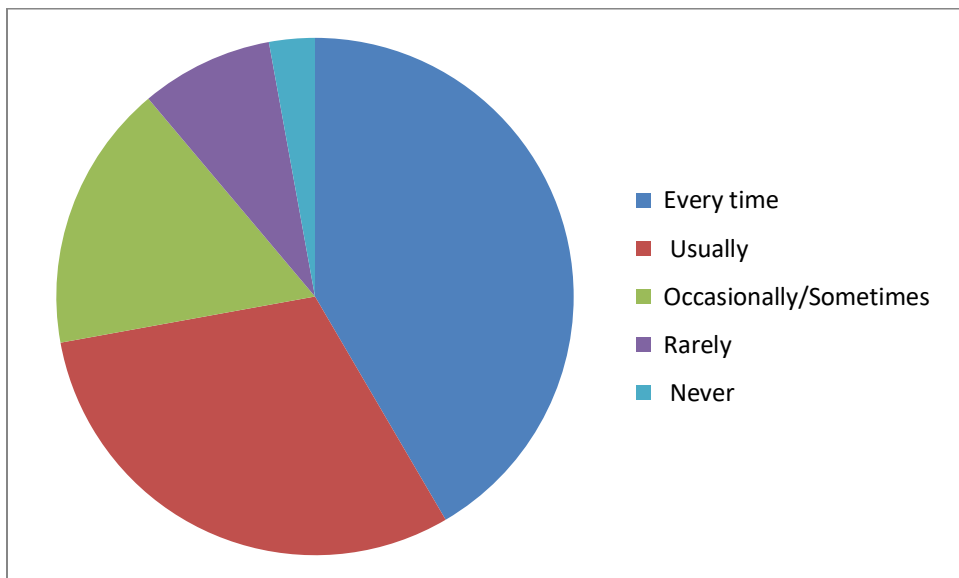
# ST. DOMINIC'S COLLEGE, KANJIRAPALLY

---

13. The teachers identify your strengths and encourage you with providing right level of challenges.



14. Teachers are able to identify your weaknesses and help you to overcome them.

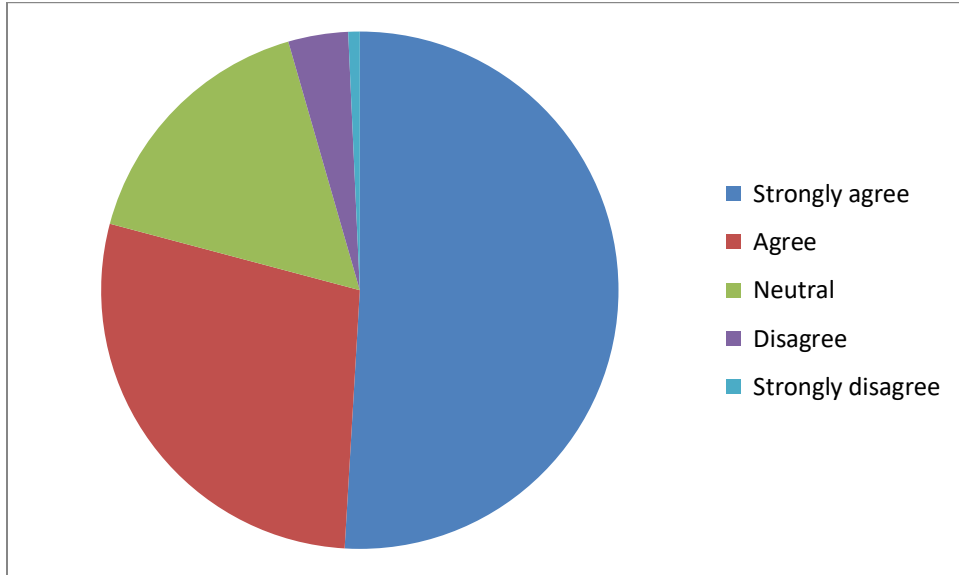




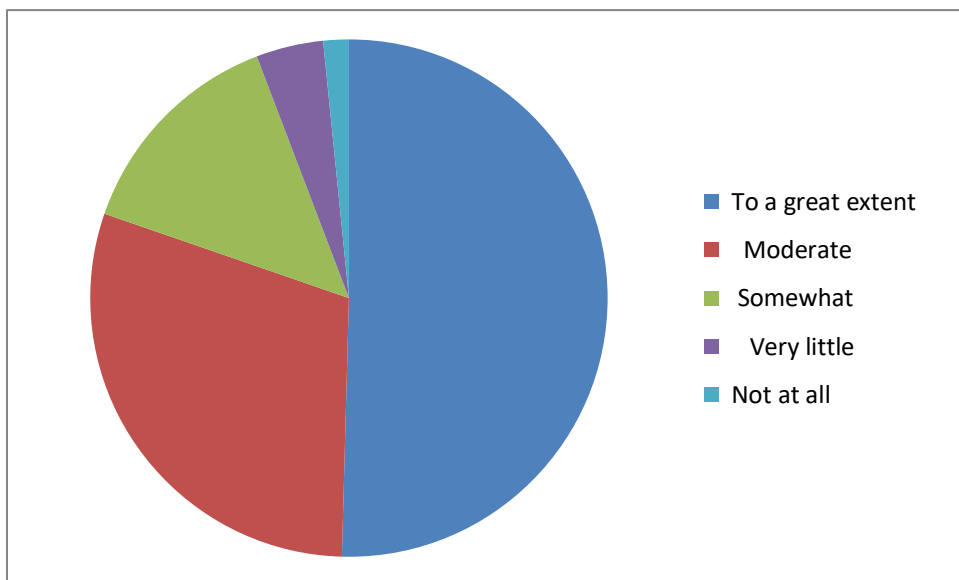
# ST. DOMINIC'S COLLEGE, KANJIRAPALLY

---

15. The institution makes effort to engage students in the monitoring, review and continuous quality improvement of the teaching learning process.



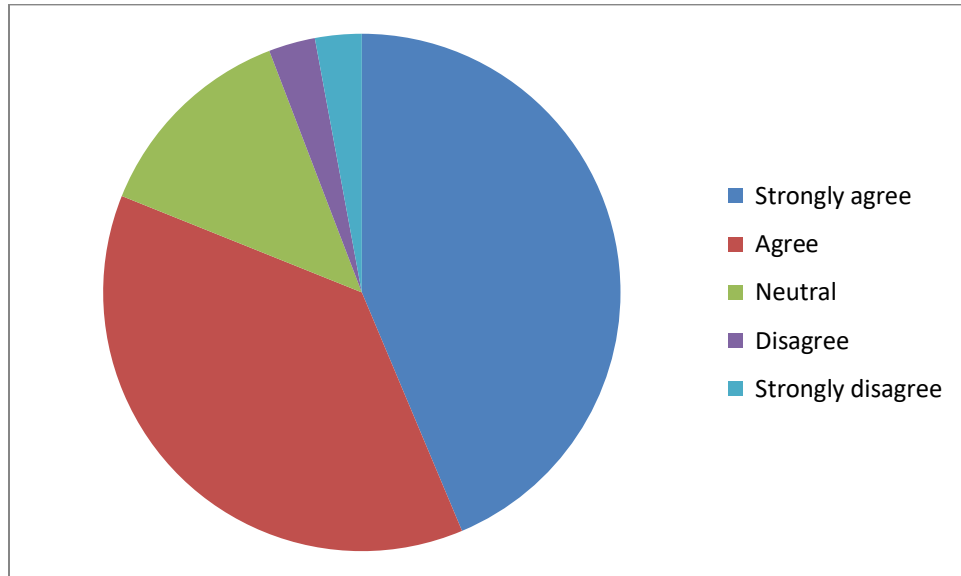
16. The institute/ teachers use student centric methods, such as experiential learning, participative learning and problem solving methodologies for enhancing learning experiences.



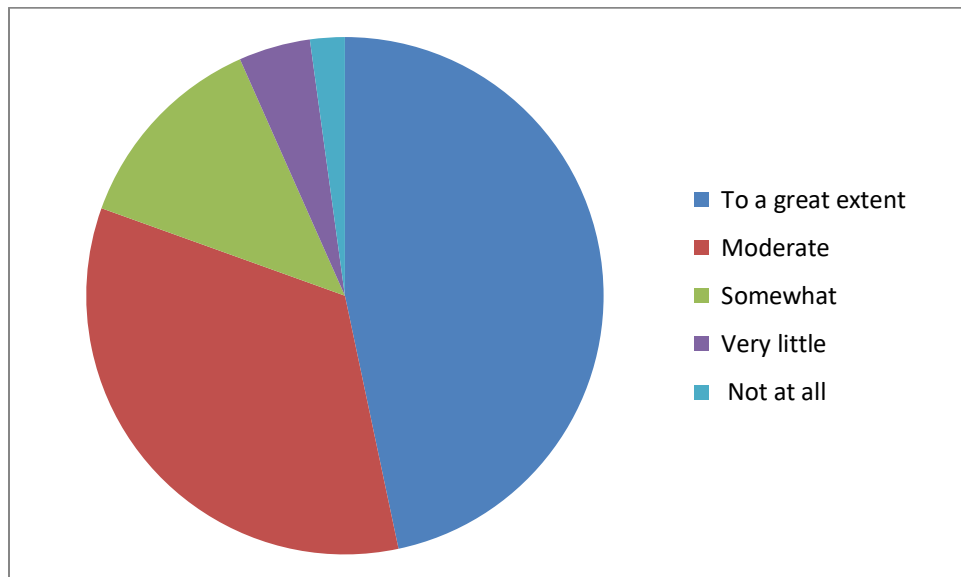
# ST. DOMINIC'S COLLEGE, KANJIRAPALLY

---

## 17. Teachers encourage you to participate in extracurricular activities



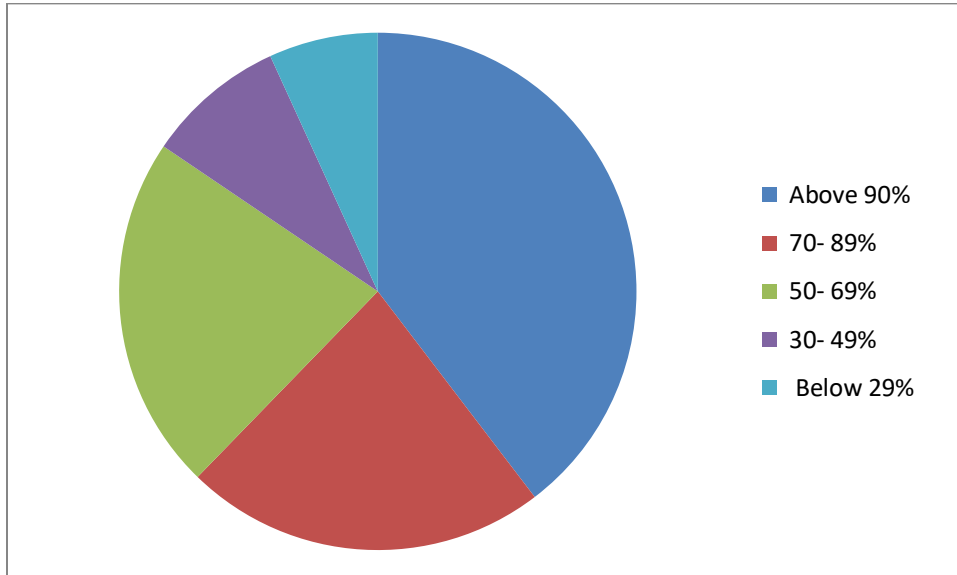
## 18. Efforts are made by the institute/ teachers to inculcate soft skills, life skills



# ST. DOMINIC'S COLLEGE, KANJIRAPALLY

---

19. What percentage of teachers use ICT tools such as LCD projector, Multimedia, etc. while teaching.



20. The overall quality of teaching - learning process in your institute is very good.

